



**SHREE**

C O R P O R A T I O N

The perfect solution for Audio Visual Needs !

Audio-Visual | IT | Surveillance

Pro – AV Solutions & Create a New Technology

**ABOUT  
SHREE CORPORATION  
TECHNOLOGIES PRIVATE  
LIMITED**

### **Company Overview:**

Shree Corporation is a prominent Commercial, Residential, and Office Automation solutions provider based in India. Specializes in Design, Supply, Installation, Integration, Service & Annual Maintenance of advanced Audiovisual Systems. Established in Feb 2012 to address the growing demand for intelligent lifestyle solutions, especially in corporate and residential sectors.

### **Expertise and Experience:**

Leveraging over 9 years of international practical experience to develop customized Audiovisual systems. Tailored solutions to meet specific customer needs, enhancing their day-to-day business operations.

### **Customer Base:**

Serves a diverse range of industries including Corporate, Software Development, Manufacturing, Education, Banking, Construction, IT, BPOs, Hospitality, Government, Event Management, Entertainment, Hospitals, Residences, and SMEs. Provides essential Audio-Visual support to drive business growth in a competitive environment.

### **Commitment to Innovation:**

Constantly integrating cutting-edge technology to enhance comfort, accessibility, and security for clients at home or work.

**Mission and Vision :** Provide clients with a comprehensive Consultation, Procurement, Installation, and Ongoing Service Management Approach for maximum ROI. Strive to excel in delivering global-standard automation solutions, catering to diverse needs with automated, functional approaches.

# Clients & Associate Architect

# Government & Education



*And Many More...*



Schindler



STTelemedia  
Global Data Centres



SERVIFY



accelya



raymond



Piramal



MAERSK

VOLTAS

A TATA Enterprise



TATA Motors Insurance Broking & Advisory Services Ltd.

KOHINOOR SQUARE



DNV-GL

WNS

Bombay Dyeing



VFS.GLOBAL



JOTUN



V.Group



THERMAX

Enterprises

And Many More...

# Data Center

 **STTelemedia**  
Global Data Centres

  
**TATA**  
TATA COMMUNICATIONS

 **Microsoft**

  
**MCX**  
METAL & ENERGY  
Trade with Trust

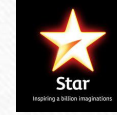
  
**PDG**

  
**nextra**  
by  **airtel**

  
**CapitaLand**

*And Many More...*

## Media & Finance



*And Many More...*



We have collaborated with numerous architects.



# End User Projects



**IIT Mumbai  
Lecture Hall Complex  
350 Seater Class Room**

*With Civil and  
Fabrication Work*



**TATA COMMUNICATIONS**

# Tata Communication Limited - Pune Command Centre

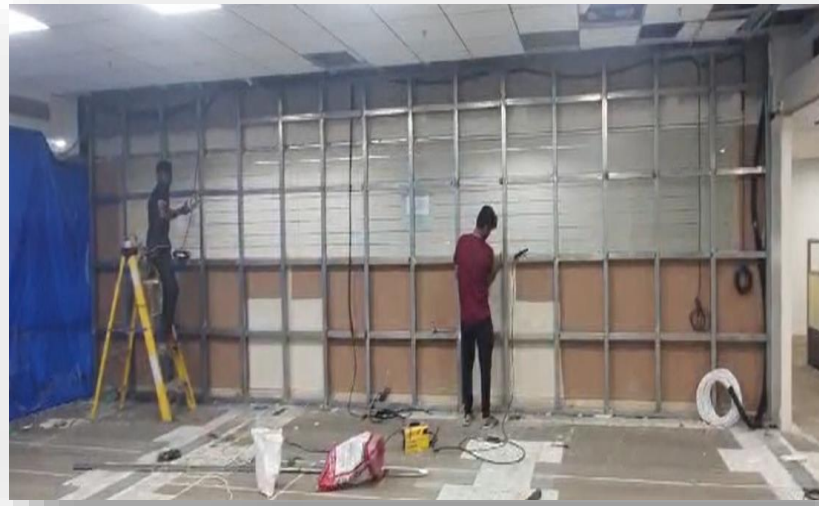
*with Civil Work Flooring to Ceiling*





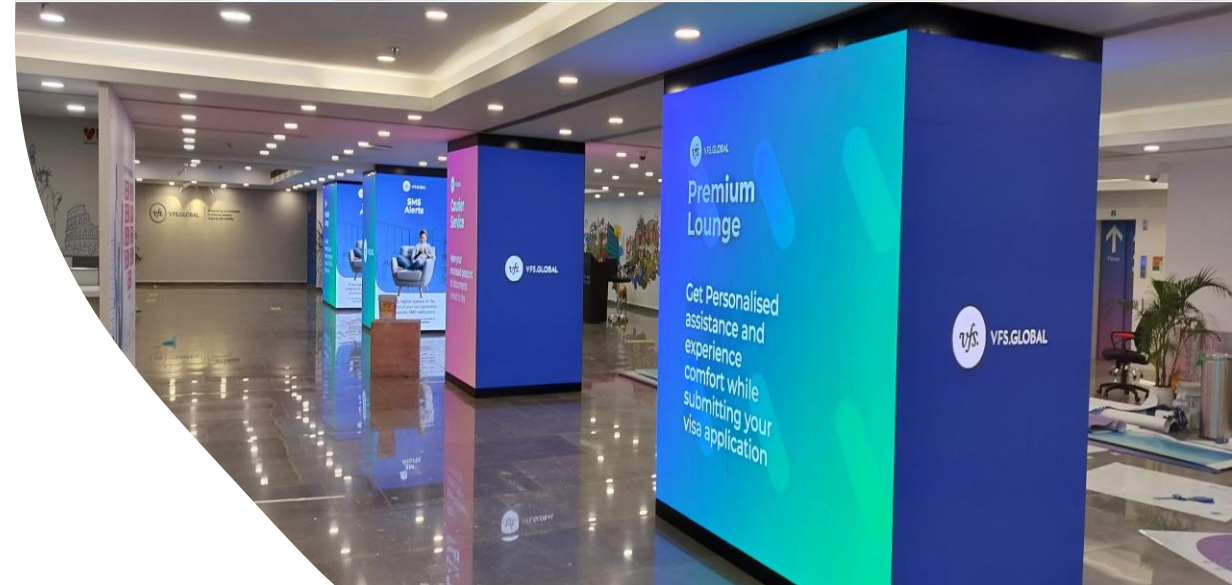
## Multi Commodity Exchange NOC Centre

*with Civil and Fabrication Work*





## VFS Global Services Private Limited VISA Office – Lower Parel





# IIT Bombay Convocation Hall



## Indian Institute of Technology, Bombay VMCC Conference Room







# Indian Institute of Technology, Bombay VMCC Conference Room





# ***IIT Bombay Auditorium Room***

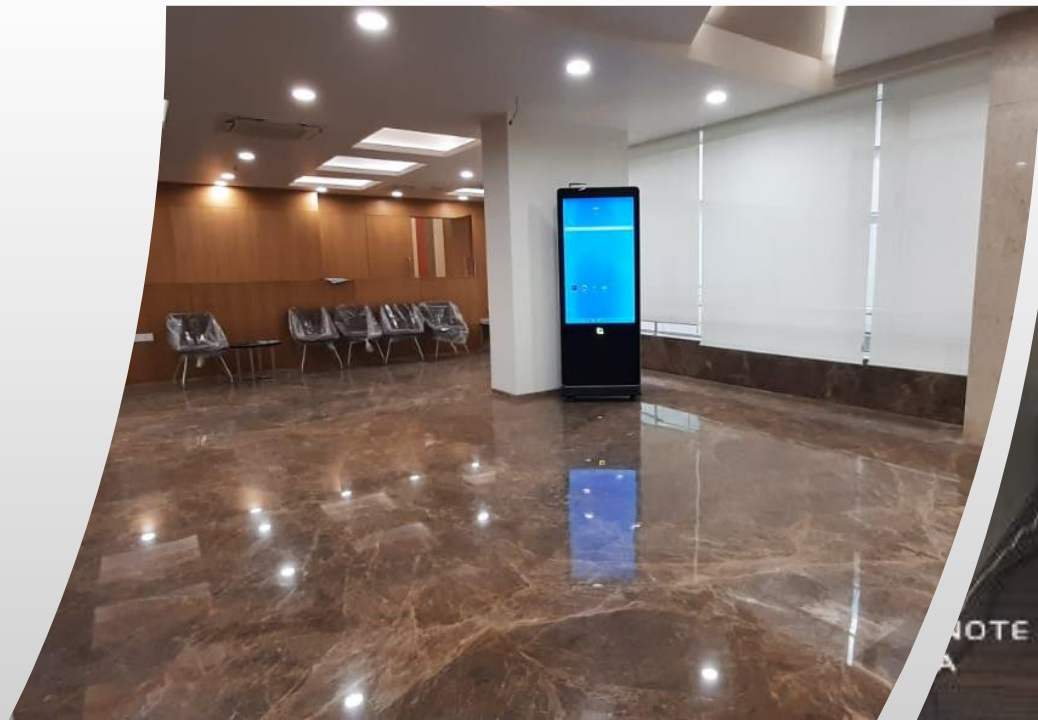


## L & T Ltd. CEO Command center



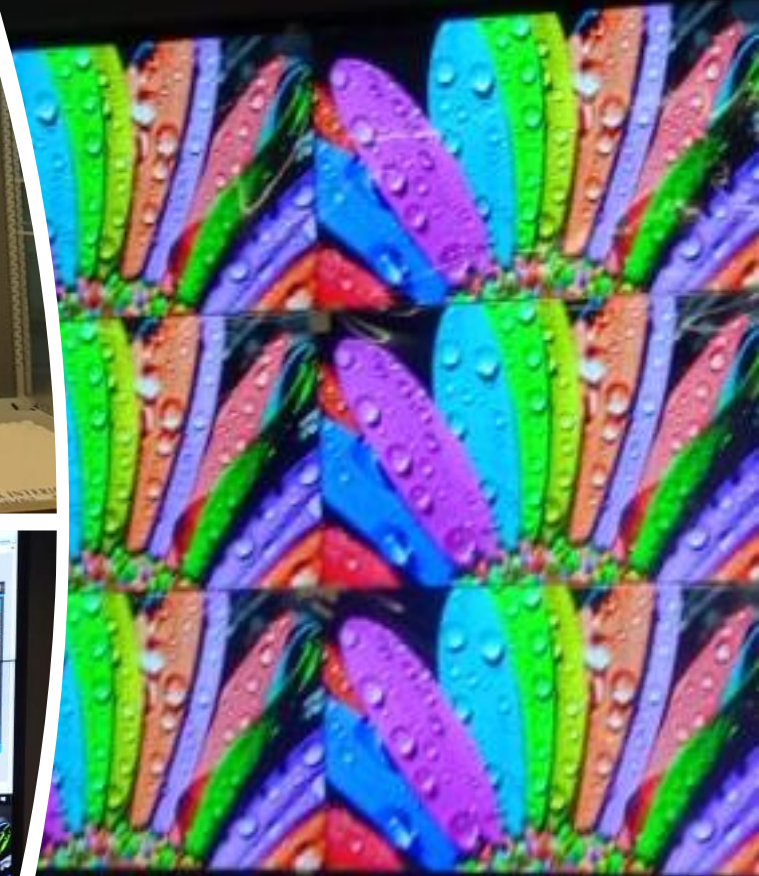
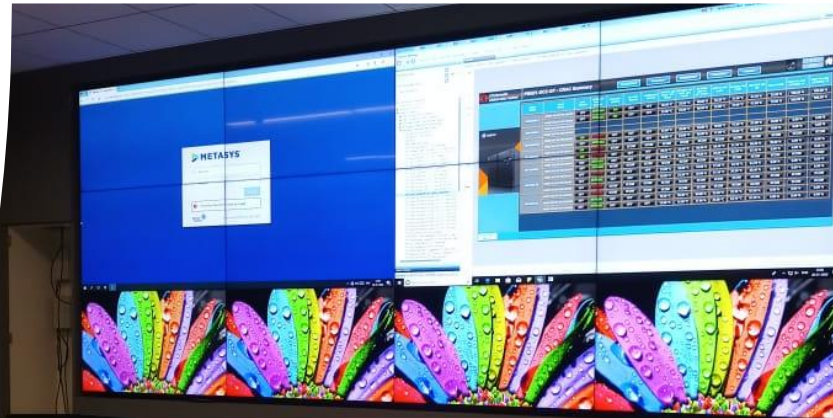


# IIT Mumbai SJMSOM Institute





## STT Global Data Centre





**Set India Private Limited  
( India Head Office Board Room)**





## PWC Board Room





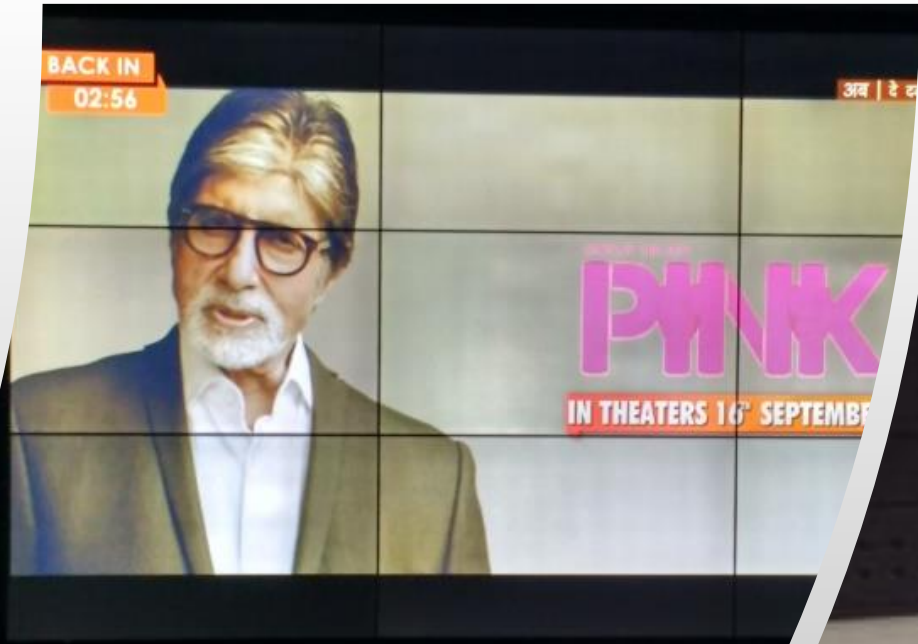
## L & T Ltd. Chairman Board Room







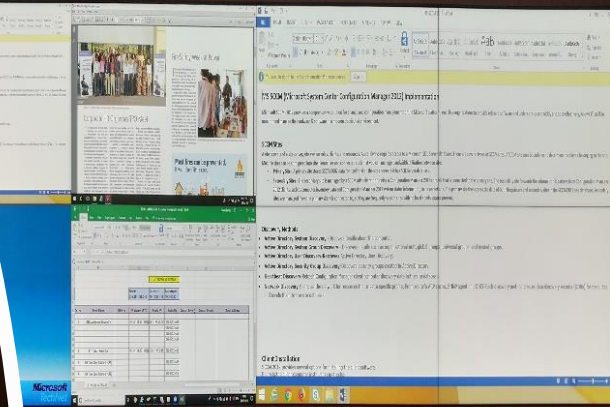
## Star India Mumbai CEO Floor Video Wall





# L & T Limited

## L & T House Auditorium, Fort



16:13  
19-07-2018



## VFS Global Training Centre



# WNS

## WNS Pune Global Experience Center



**BOUNCE INC**  
FREE SPIRITS UNLEASHED

**Bounce INC**



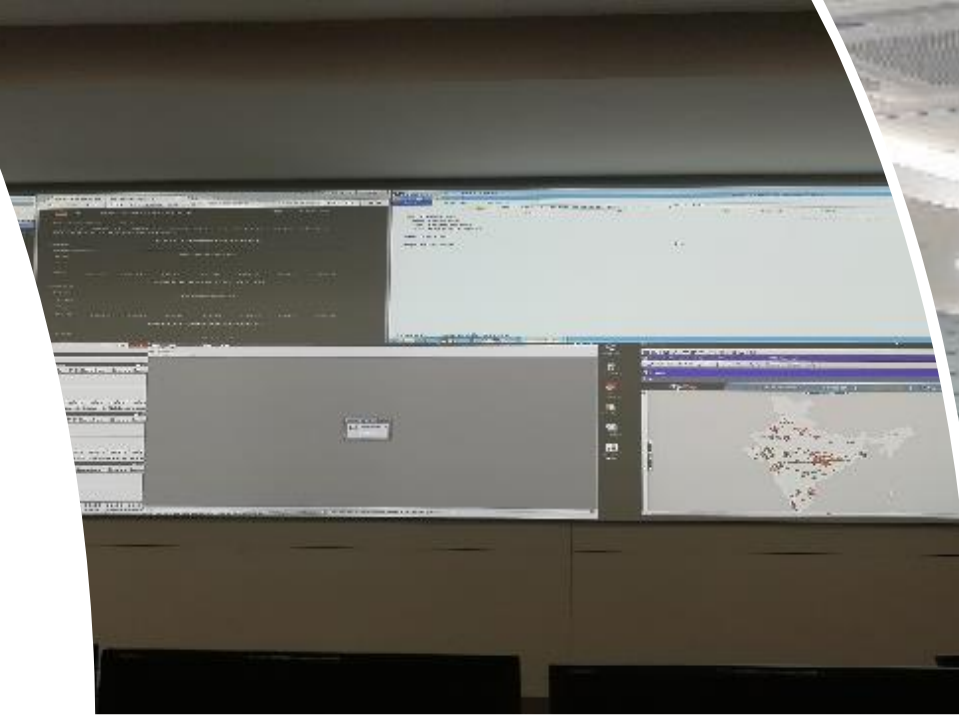


## Maharashtra Police CCTV Control Room



**MCX**  
METAL & ENERGY  
Trade with Trust

## MCX Board Room





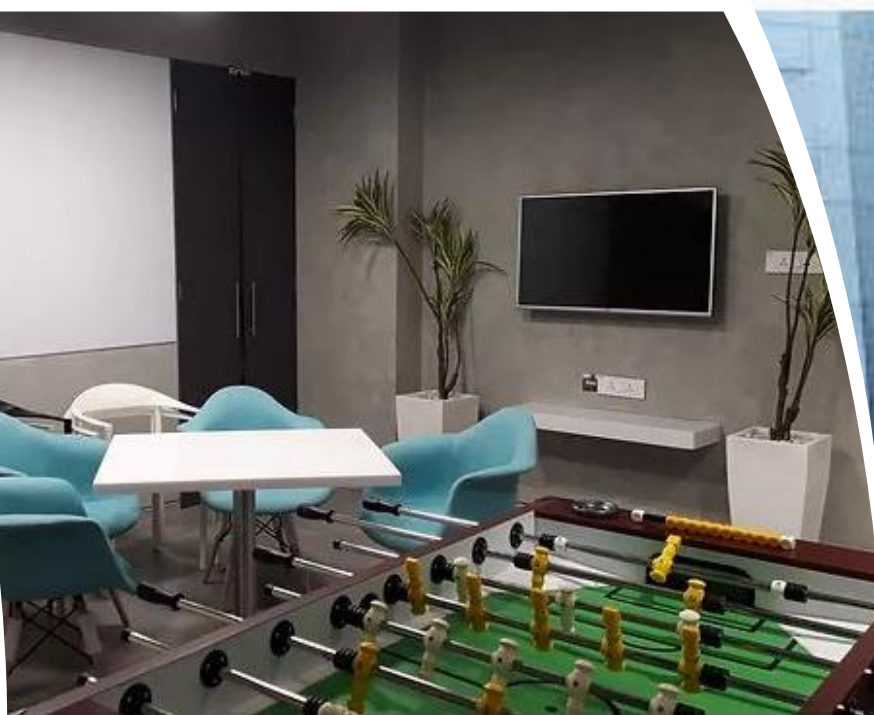
## STT BKC Conference Room

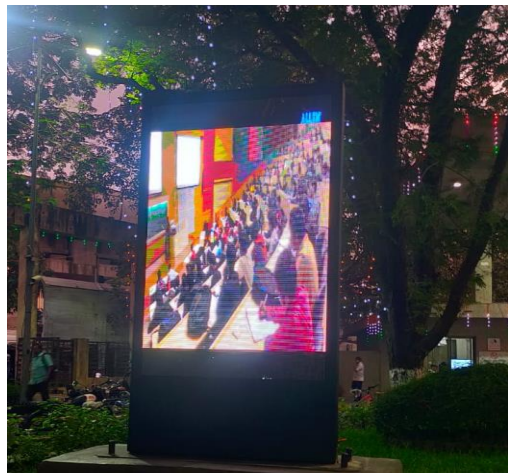






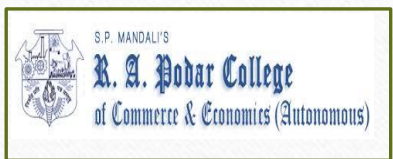
## Microsoft - Mumbai





# Annual Maintenance Clients





Major AMC Clients

*And Many More...*

# THANK YOU

---



## **Shree Corporation Technologies Private Limited**

Unit No. K-109, First Floor, Ansa "K" Industrial  
Estate, Saki Vihar Road, Sakinaka,

Andheri -East, Mumbai - 400072.

Help Desk: 022-35116173 | Mobile: 9152247174

Email: [info@shreecorporation.co.in](mailto:info@shreecorporation.co.in)

Website: [www.shreecorporation.co.in](http://www.shreecorporation.co.in)

